



## **PUBLIC WEBINAR 20/07/2017**

**Invitation to S2R JU Associated Members to submit an answer in view of the realignment of their activities and additional commitment to the S2R Programme**

**Carlo M Borghini, Executive Director**

**PUBLIC-PRIVATE PARTNERSHIP  
R&I PLATFORM FOR RAIL  
WORKING TOGETHER  
DRIVE INNOVATION  
BY 2024**



**COST  
EFFICIENCY**  
50% reduction of life-cycle costs  
of the railway transport system



**CAPACITY**  
100% increase in capacity



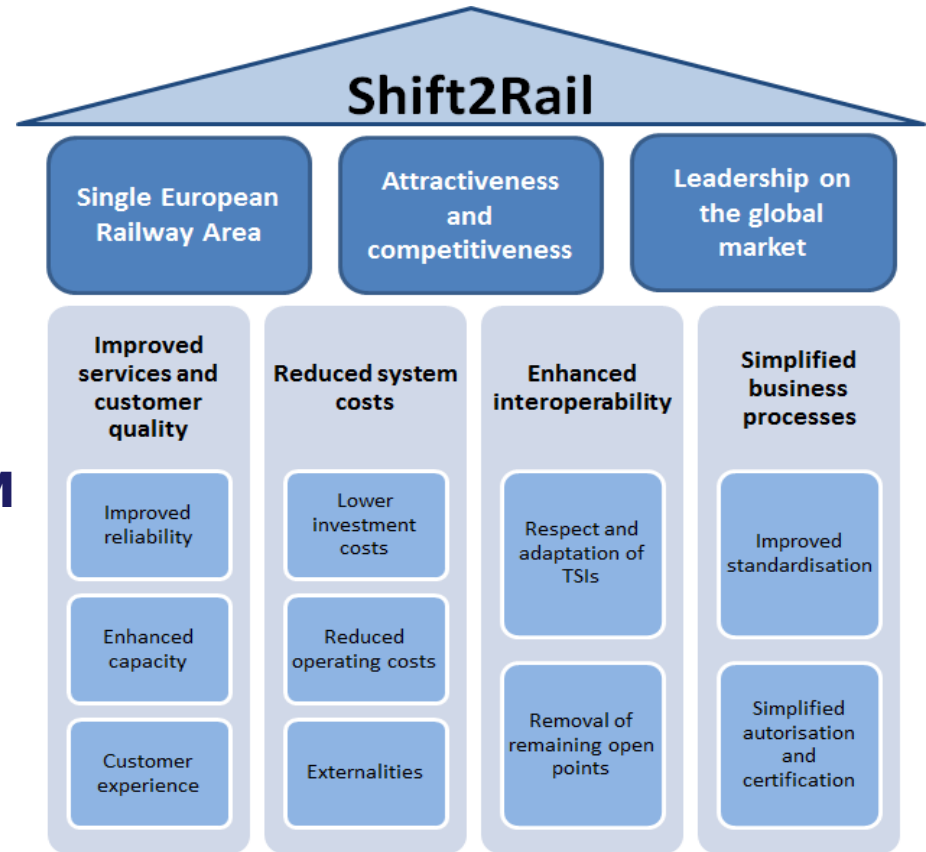
**OPERATIONAL  
EFFICIENCY**  
50% increase in reliability  
and punctuality



**SINGLE EUROPEAN  
RAILWAY AREA**

**ATTRACTIVENESS &  
COMPETITIVENESS OF THE  
EUROPEAN RAILWAY SYSTEM**

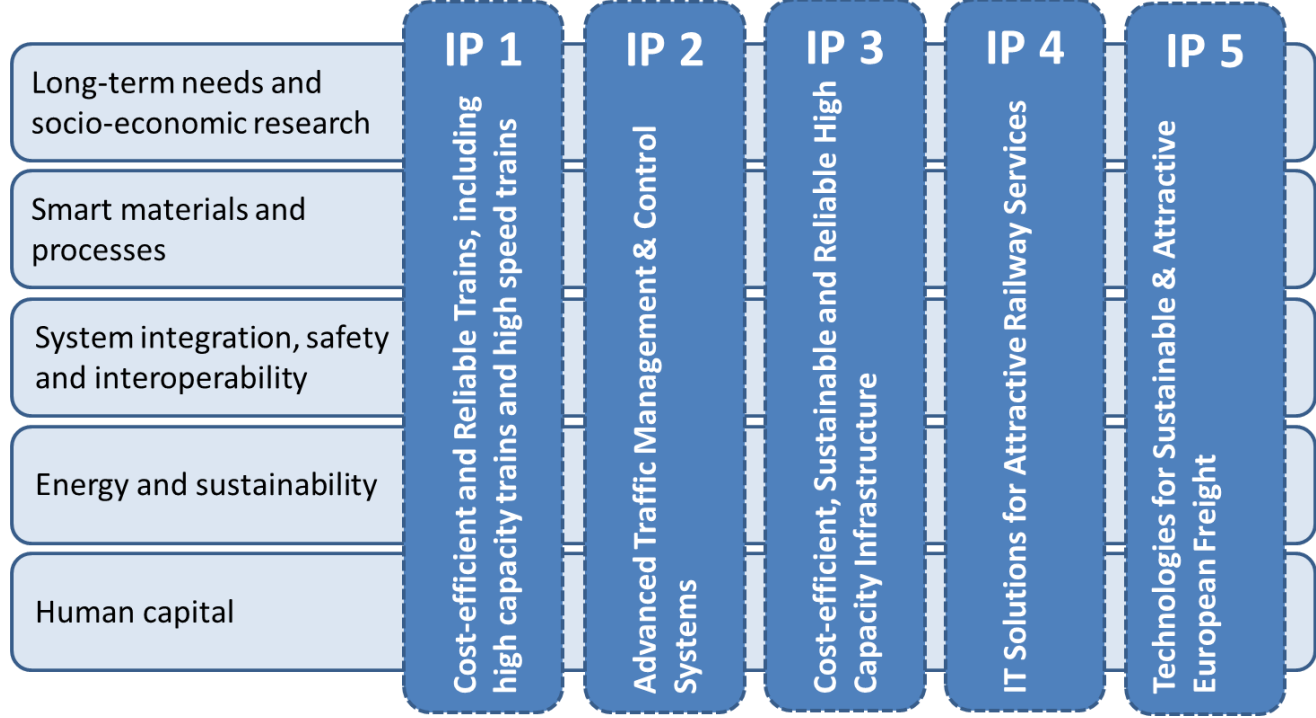
**LEADERSHIP ON THE  
GLOBAL MARKET**



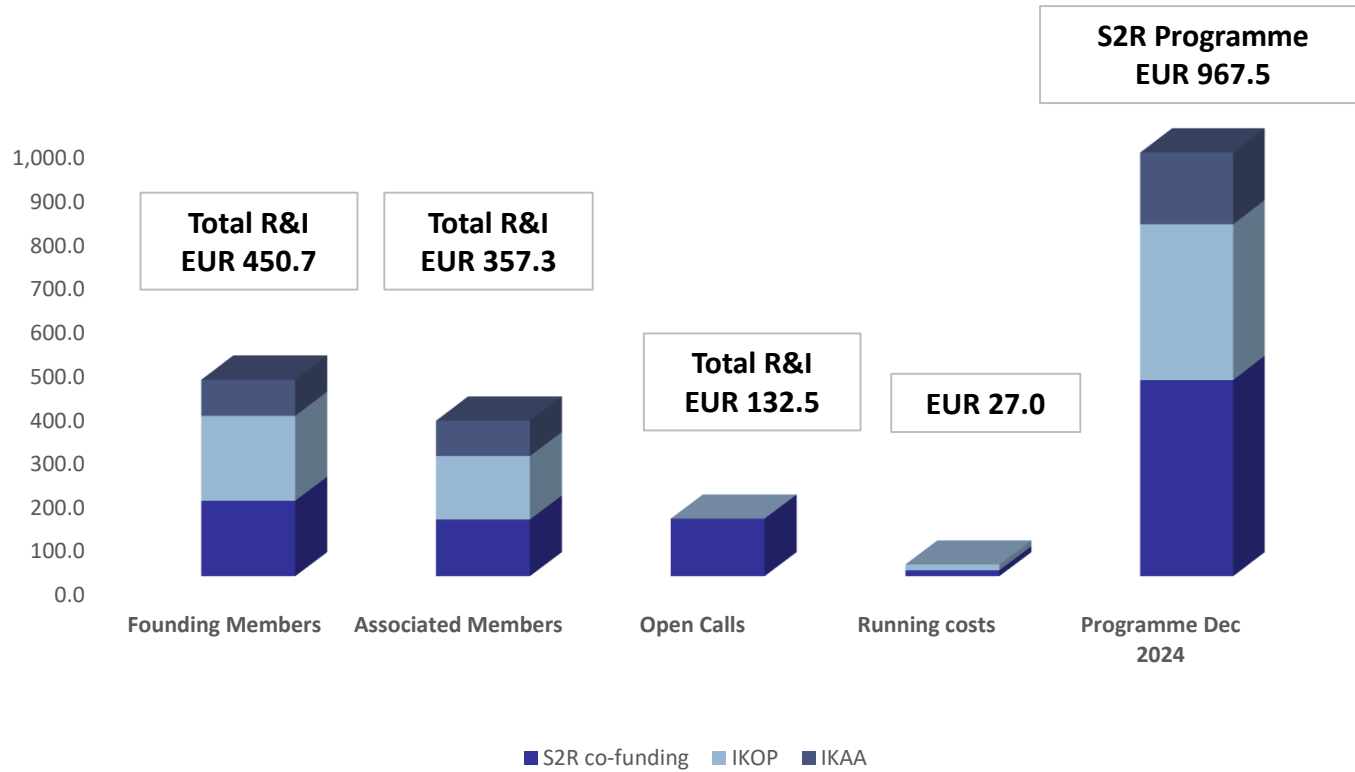
## **S2R PROGRAMME: A NEW APPROACH TO R&I IN RAILWAY**



**S2R PROGRAMME:  
INTEGRATED  
CONSISTENT  
DELIVERY ORIENTED**



# PROGRAMME IN FIGURES



# Thank you

